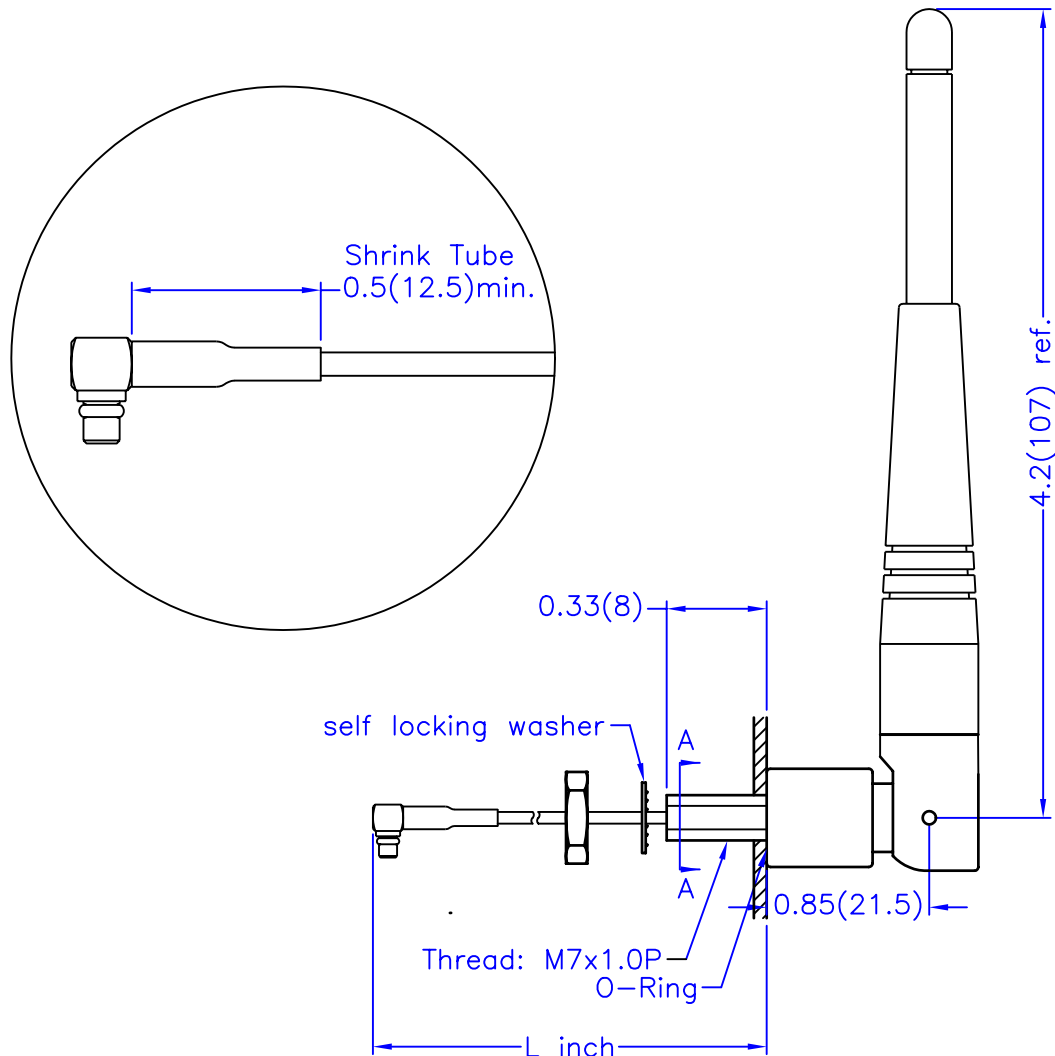


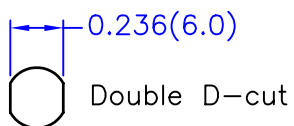
P/N **A24-HABMM-P5I**

Alternative Connectors
Straight MMCX Plug

ECN	Date	Description
	5/30/02	change mounting thread/hole from round to double D-cut
	6/15/02	Supersede P/N S181FL-L-RMM-2450S-DR



A-A view-Thread cross-section



Electrical Properties:

Frequency Range: 2.4~2.5 GHz
 Impedance: 50Ω nominal
 VSWR: <2.0:1
 Gain: *2.0 dBi
 Radiation: Omni
 Polarization: Vertical
 *Gain is measured under no flying lead.

Mechanical Properties:

Cable: M17/93-RG178; Harbour Industries
 Cable Length: Standard length L=5 inches.
 or to be specified.
 Connector: R/A MMCX Plug(male);
 Nearson 25-03M-TGG
 Material:
 Overmold: Polyurethane(Black); BASF
 Swivel: Polyurethane(Black); BASF and
 Polycarbonate(Black); Bayer
 Operation Temp.: -20°C to +65°C
 Storage Temp.: -30°C to +75°C

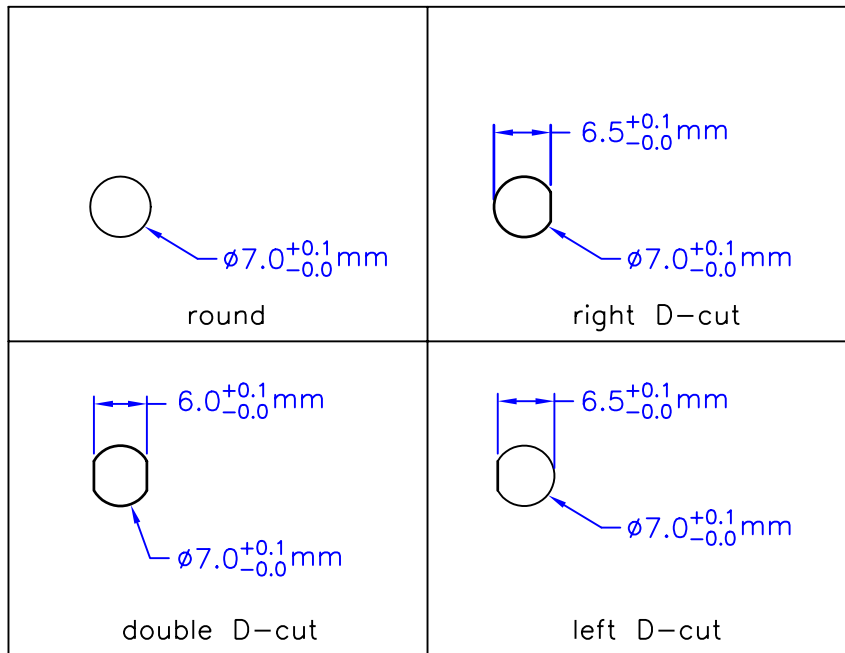
TITLE	2.4GHz Fixed Mount Swivel Antenna	DATE	SHEET
UNIT	DWG. NO. A09-HABMM-P5I		1 of 2
in.(mm)			
SCALE			
None			

MaxStream, Inc.

P/N **A24-HABMM-P5I**

Alternative Connectors
.Straight MMCX Plug

ECN	Date	Description
	5/30/02	change mounting thread/hole from round to double D-cut
	6/15/02	Supersede P/N S181FL-L-RMM-2450S-DR



Recommended Mounting-Hole Dimensions

L (inch)	Attenuation (dB)
3"	0.20 dB
4"	0.27 dB
5"	0.33 dB
6"	0.40 dB
8"	0.53 dB
10"	0.66 dB
12"	0.79 dB

Flying Lead Cable Length v.s. Attenuation Table
 Standard M17/93-RG178 Cable Measured @ 2.4GHz

TITLE	2.4GHz Fixed Mount Swivel Antenna	DATE	SHEET
			2 of 2
UNIT	DWG. NO.	A09-HABMM-P5I	
in.(mm)			
SCALE			
None		MaxStream, Inc.	